

PRODUCT DATA SHEET

Protein A - 10nm Silver Conjugate (0.5ml)

Catalog No. SC-10-05-05

Size: 0.5ml

Description

Protein A coupled to 10nm silver nanoparticles. Suitable for use in immunoblotting, light microscopy, and electron microscopy applications.

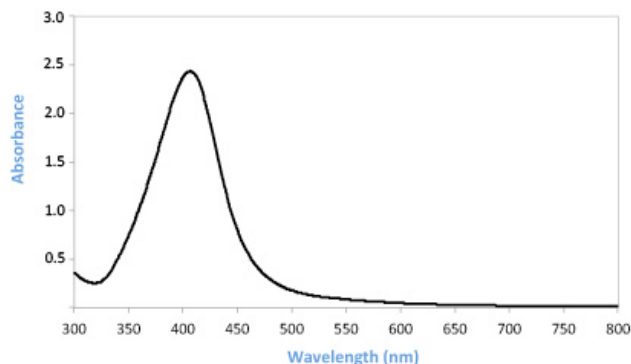
Provides a permanent and sensitive label (100pg or less) when used in conjunction with Cytodiagnosics membrane and microscopy silver enhancer kits, see related product below.

Concentration: 0.06 mg/ml (OD=7.5)

Conjugated Protein: Protein A (extracellular), from *S. aureus*

Storage Buffer: 10mM PBS (pH 7.4), 20% glycerol (v/v), 1% BSA

Working Dilution: 1:10 – 1:50



Storage

Store undiluted in storage buffer at 2-8° C. Stable for at least 2 months if stored as specified.

Product Safety and Handling

This product is for R&D use only, not for drug, household, or other uses. Please review the material safety datasheet (MSDS) available online for proper safety and handling procedures.

Related Products

Silver Enhancer Kit for Membranes Cat No. SR-01-02

Silver Enhancer Kit for Microscopy Cat No. SR-01-01

Standard Immuno Dot-Blot Protocol

(Adapted from Moeremans et al. [1])

1. Spot one microlitre drops of a serial dilution of your protein (100-0.1ng) in PBS supplemented with 50ug/ml of BSA on nitrocellulose or PVDF membrane.
2. Let protein drops dry into the membrane.
3. Block Membrane for 30 minutes using 1% (w/v) dry milk in 1X PBS at room temperature.
4. Incubate with primary antibody for 2 hours at room temperature.
5. Wash membrane 3x5 minutes with blocking solution prepared as above.
6. Incubate for 2 hours (or longer for increased sensitivity) with secondary silver conjugate diluted 1:10 (OD=0.75) times with blocking solution (0.2% Blocking Solution). See Tech Note Conjugation of Proteins to Silver Nanoparticles for preparation of a silver conjugate.
7. Wash 3x5 minutes as above.
8. Dry membrane and record data.
9. (OPTIONAL) Proceed with [silver enhancement](#) to improve sensitivity.



Ordering Information

For ordering call 866-344-3954 or visit us online at www.cytodiagnostics.com



Figure 1. Example dot-blot assay for Cytodiagnostics [streptavidin gold conjugate](#) (top left) and our [streptavidin silver conjugate](#) (top right) before and after enhancement using Cytodiagnostics silver enhancement kit for membranes. Bottom picture illustrates and highlights the difference in appearance (color) of 50nm anti-human IgG noble metal nanoparticle conjugates prepared using [NHS-activated gold nanoparticles](#), [NHS-activated gold nanourchins](#), and [NHS-activated silver nanoparticles](#), respectively.

References

1. M. Moeremans, et al., Journal of Immunological Methods, 1984, 74, 353