

Protein Marker (unstained), Broad Range, Ready to use

02-460 250 ul

Protein Ladder, Broad Range (12-250 kDa) is a mixture of highly purified proteins that resolves into 9 bands when electrophoresed. The Protein Ladder is suited for use in SDS-PAGE.

USAGE: Use 5 ul per lane in SDS-PAGE

Storage Temperature: -20°C

Solution: 70 mM Tris-HCl, 33 mM NaCl, 40 mM DTT, 1 mM Na₂EDTA, 30% Glycerol
2% SDS, pH 6.8 at 25°C

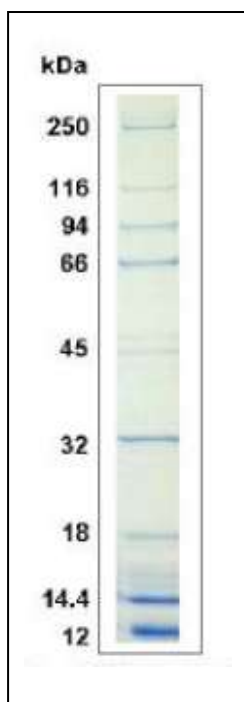


Figure. 10-20% Tris-glycine SDS-PAGE gel.

Related Product: 02-440: Prestained Protein Size Marker, broad range