

High quality
Chinese global
share prices

欧美品质 中国价格 全球共享



osence



公司简介 INTRODUCTION

源于意大利的Dosence计量泵，产品严格按照欧盟相关标准和API675标准制造，确保产品的寿命和计量精度，而且合理化的设计保证我们的产品具有最优化的性价比，产品各个阶段都实施连续的质量控制及严格的检测过程，使得我们的产品具有极高的可靠性，产品广泛应用于石油化工、精细化工、水处理、表面处理、化肥行业、电厂、电子、半导体、食品、医药、化工等行业

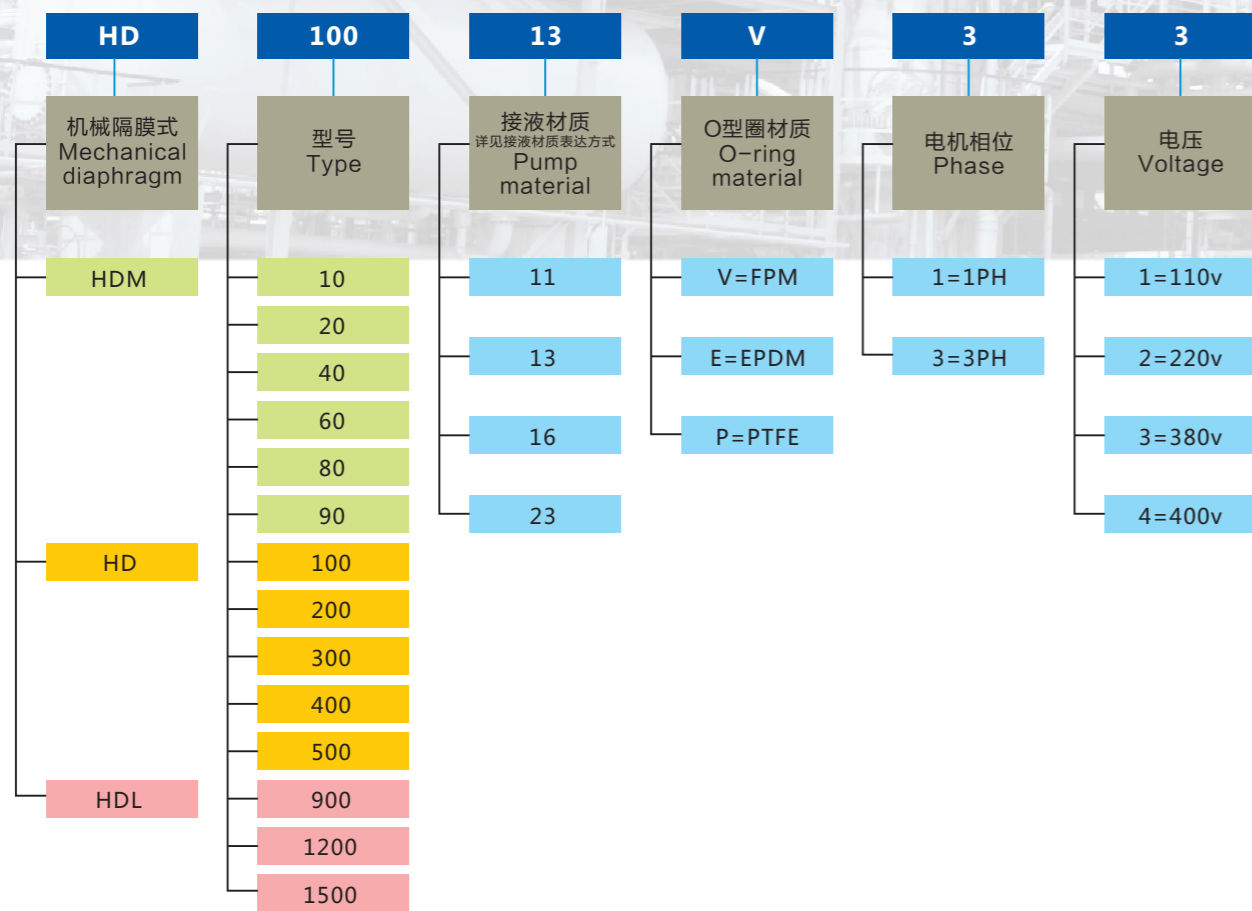
本公司，积累了大量关于计量泵现场实际应用的经验，针对中国市场实际使用的情况，公司在原基础上完善了产品的功能，使得我们的产品更加符合中国地域化

公司为求企业的永续发展及对顾客的服务与责任，坚持专业第一，建立了强大的销售及售后服务网络，以便为客户提供更好更快的服务。

Our product, originated from Italy Dosence metering pump, is manufactured strictly in accordance with the relevant EU and API675 standards. The rational design ensure our product has optimal cost-effective. The continuous quality control and rigorous testing process in every production stages make our product extremely reliable and it is widely used in petrochemical, fine chemicals, water treatment, surface treatment, chemical fertilizer industry, power plants, electronics, semiconductor, food, medicine, chemical industry, etc.

Our company, has accumulated a lot experience about the practical application of metering pump. According to the actual use situation of the Chinese market, the company is committed to improving the product based on the original function, which makes our product oriented more in line with China's regional. For the sake of sustainable development and the service and responsibility to customers, the company adhere to professional first, has built a strong marketing and after-sale service network to provide better and faster service.

泵的标识 Pump identification



5	U	N	H
电机频率 Frequency	出入口连接方式 Connection mode	电机类型 Motor type	调节方式 Regulation mode
5=50Hz 6=60Hz	U=外牙螺纹连接 External thread connection F=法兰连接 Flange connection	N=标准电机 standard motor S=特殊电机 Special motor E=防爆电机 Explosion proof motor 0=无电机 No motor	H=手动调节 Hand adjustment S=转速调节 Speed adjustment L=冲程调节 Stroke length adjustment

接液材质表达方式

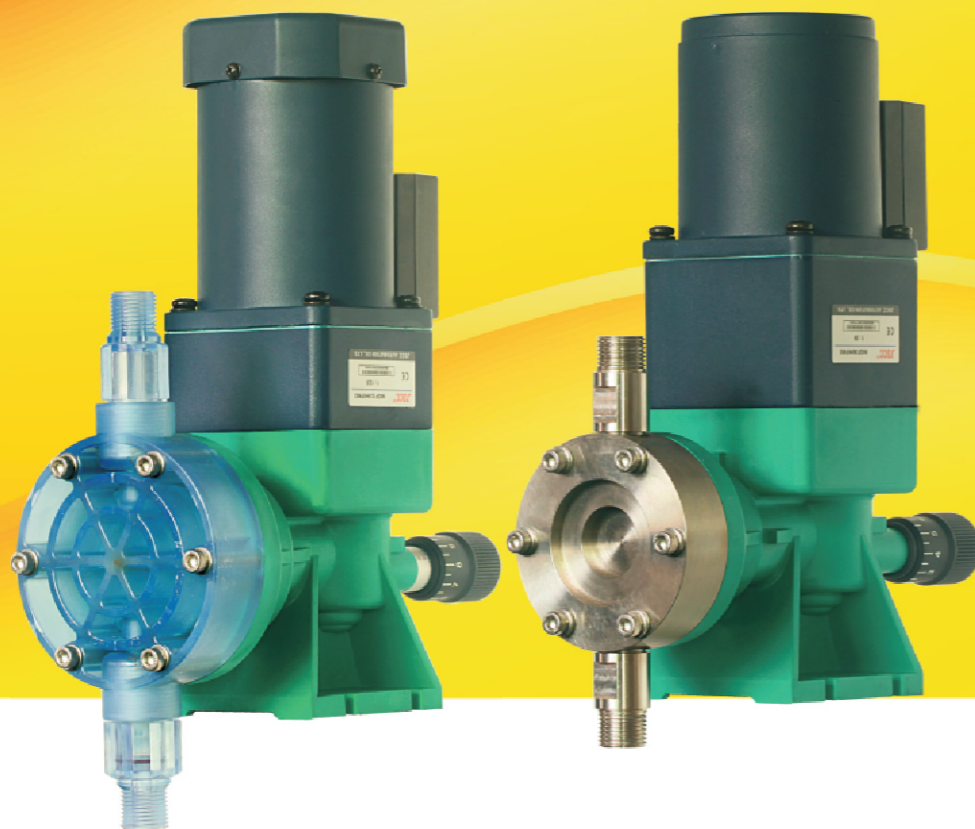
Contact with liquid material expression

表达形式 Model	泵头 Head	隔膜 Diaphragm	球阀 Value ball	阀座 Value seat
11	SUS316	PTFE+NBR	SUS316	SUS316
13	PVC	PTFE+NBR	PYREX/PTFE	PVC
16	PVC	PTFE+NBR	SUS304	SUS304
23	PVDF	PTFE+NBR	PTFE	PVDF

HDM series

● HDM系列特点 · HDM SERIES ADVANTAGE

- 流量范围：11.7L/H~124L/H，压力范围：0~5kgf/cm²
- 体积小，占地面积少，重量轻，结构简单，动作平稳，便于维护
- 使用方便，配管灵活，软硬管皆可
- 双球阀设计，能保证计量的准确性
- 流量调节范围0~100%，无论停机还是运转中皆可调节流量
- 透明的泵头和出入口阀设计，使的泵运行过程可直接观看
- 独特的底阀设计，可以避免滤网无法滤除的颗粒对泵的影响
- flow range: 11.7L/H~124L/H, pressure range: 0~5kgf/cm²
- small size, small footprint, light weight, simple structure, smooth action, easy to maintain
- easy to use, flexible pipes, tubes can be hard and soft;
- double balls valve design, to ensure the accuracy of hydrometry;
- Flow adjustment range of 0 to 100%, can be either stopping or running regulate the flow of operation.easy to use, flexible pipes, tubes can be hard and soft;



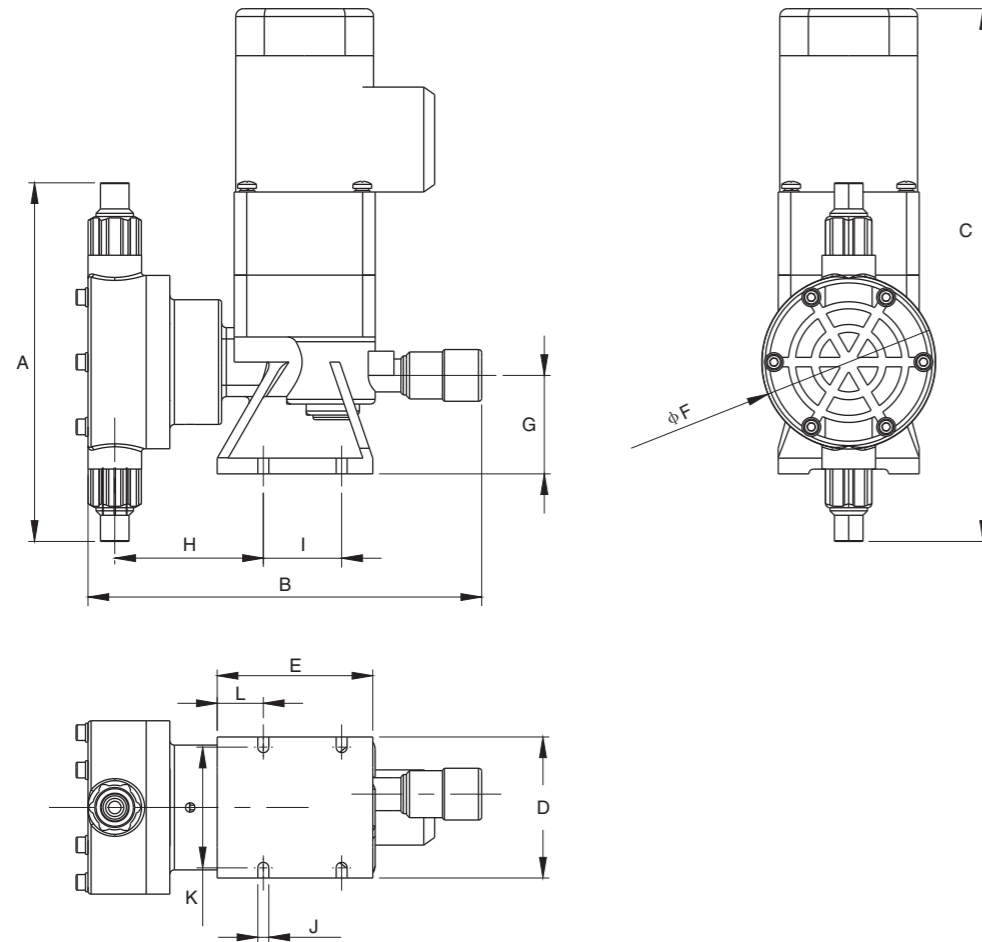
HDM系列机械隔膜计量泵性能参数表

HDM series mechanical diaphragm metering pump performance

频率 Frequency	50HZ	60HZ	50HZ	60HZ	50HZ	60HZ	50HZ	60HZ	50HZ	60HZ	50HZ	60HZ	压力 Kgf/cm ²	
减速比 Gear ratio	1:36		1:20		1:12.5		1:20		1:15		1:12.5			
型号 Type	HDM10		HDM20		HDM40		HDM60		HDM80		HDM90			
流量 Flow (L/H)	11.4	17.4	23	28	38.4	41	58	63.8	86	108	124	-		0
	10.8	15	20	25.8	36	40	40.8	48.2	73.8	97	107	-	注射阀	
	3	5.1	9.9	13	21.6	26	29	37.5	64.8	81	90	-	3	
	1.8	4	6	9	15.6	16.8	25.2	32.4	54	72	82	-	5	
软管口径 Soft pipe diameter (mm)	Φ41DXΦ6OD						Φ91DXΦ14OD							
硬管口径 Hardpipe diameter (inch)	1/2						1/2							
功率 Power (w)	40						90							
电压 Voltage (v)	1 ph 220v or 3 ph 380v													
重量 Weight (kg)	4.5	4.5	4.5	4.5	4.5	4.5	5.7	5.7	5.7	5.7	5.7	5.7		

HDM系列尺寸图

HDM series outline deimension drawing

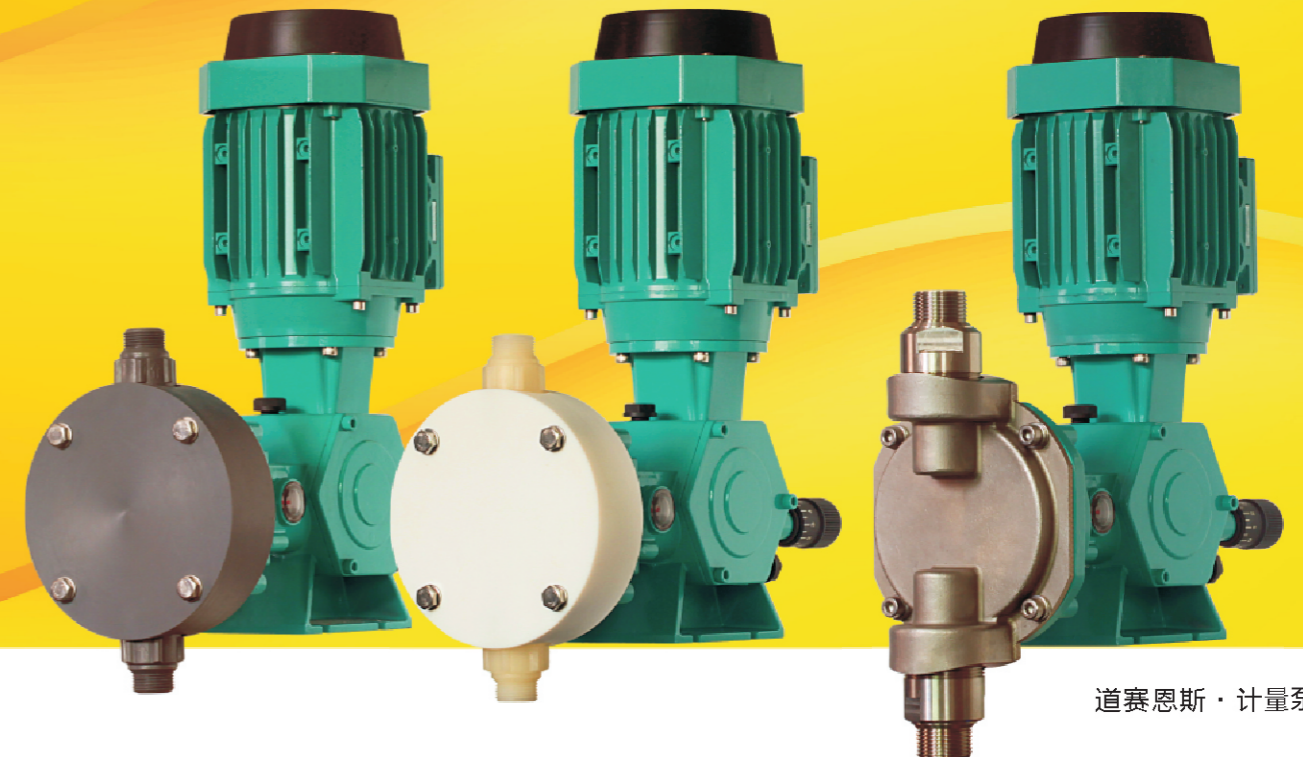


型号	HDM10	HDM20	HDM40	HDM60	HDM80	HDM90
A	177	177	177	299	229	229
B	248	248	248	254	254	254
C	300	320	300	300	355	335
D	90	90	90	90	90	90
E	99	99	99	99	99	99
F	92	92	92	111	111	111
G	63	63	63	63	63	63
H	75	75	75	95	95	95
I	50	50	50	50	50	50
J	7	7	77	7	7	7
K	77	77	77	77	77	77

HD series

• HD 系列特点 · HD SERIES ADVANTAGE

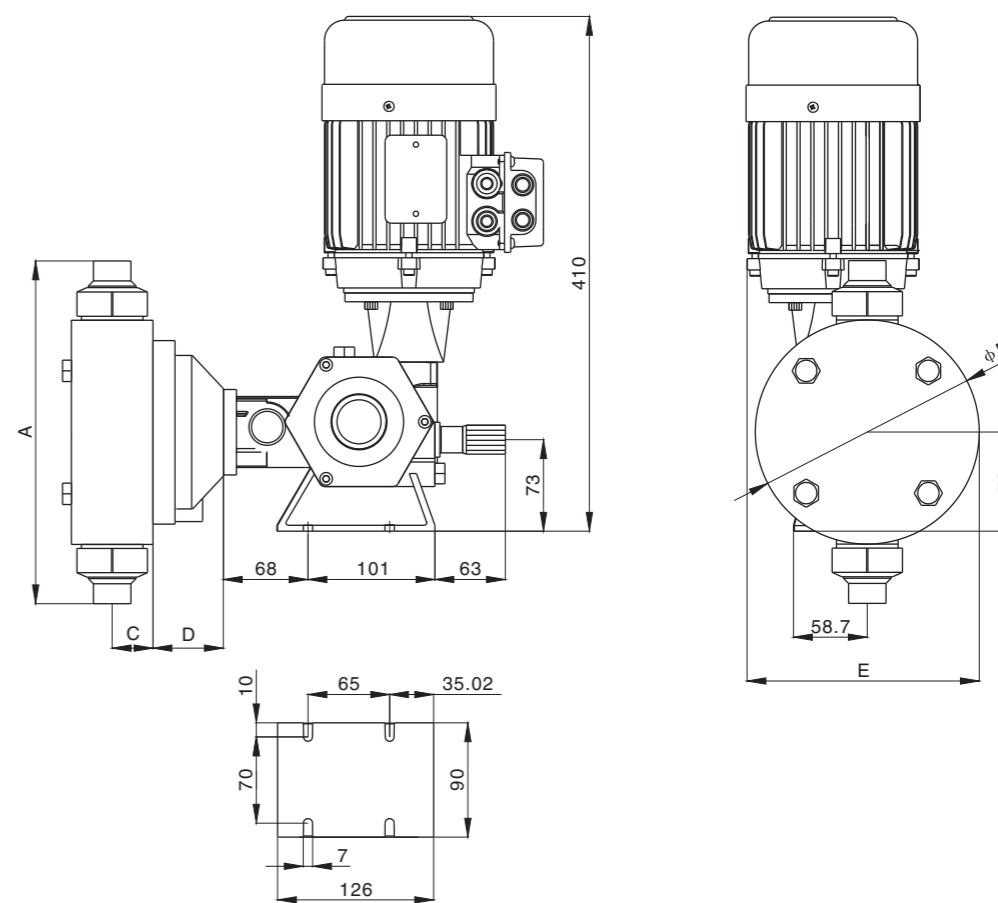
- 流量范围：154L/H~574L/H；压力范围：0~8kgf/cm²
- 体积小，占地面积少，重量轻，结构简单，动作平稳，便于维护
- 流量调节范围0~100%，无论停机还是运转中皆可调节流量
- 可实现多泵头结构，即提高流量也可以输送不同介质
- PVC，PVDF泵头皆机加工而成，耐压强度高，即使泵出口出现堵塞情况，泵头也不易开裂
- 独特的传动设计，泵运行噪音底
- flow range: 154L/H~574L/H; pressure: 0~8kgf/cm²
- small size, small footprint, light weight, simple structure, smooth action, easy to maintain
- Flow adjustment range from 0 to 100%, can be either stopping or running regulate the flow of operation
- can achieve multi-head structure, that can improve the flow of transport or deliver different medium
- PVC, PVDF pump heads are made by machine, high strength, even if the pump outlet blockage, the pump head is not easy to crack
- Unique transmission design, the noise of pump running is very low





HD系列尺寸图

HDseries outline deimension drawing



HD系列机械隔膜计量泵性能参数表

HD series mechanical diaphragm metering pump performance

型号 Type	冲程频率 Stroke frequency (Hz)	流量 Flow (L/H)	最大压力 Max pressure (kgf/cm ²)	出入口径 Aperture (inch)	功率 Power (kw)	电压 Voltage (v)	冲程长度 Stroke length (mm)	重量 Weight (kg)
HD100	120	154	8	1/2	0.25	3 ph 220v /380v 50Hz /60Hz	10	12
HD200	120	255	5	3/4				12.5
HD300	120	331	3	3/4				13.5
HD400	120	408	3	1				14
HD500	120	574	3	1	0.37	12.5	14.5	
HDH200	120	255	7	3/4	0.37		13.1	
HDH300	120	331	7	3/4	0.37		14.1	
HDH400	120	408	7	1	0.55		14.6	
HDH500	120	574	7	1	0.75		15.1	

型号 Type	Excution11\13\16\23											
	A	B	C	D	E	F	G	H	I	J	K	L
HD100	170	313	410	90	126	120	73	136	65	7	70	26
HD200	204	328	410	90	126	140	73	143	65	7	70	26
HD300	212	328	410	90	126	150	73	143	65	7	70	26
HD400	280	342	410	90	126	170	73	219	65	7	70	26
HD500	280	342	410	90	126	170	73	219	65	7	70	26
HDH200	204	328	410	90	126	140	73	143	65	7	70	26
HDH300	212	328	410	90	126	150	73	143	65	7	70	26
HDH400	280	342	410	90	126	170	73	219	65	7	70	26
HDH500	280	342	410	90	126	170	73	219	65	7	70	26

HDL series

● HDL系列特点 · HDL SERIES ADVANTAGE

- 流量范围：900~1500L/H；压力范围：0~5kgf/cm²
- 体积小，占地面积少，重量轻，结构简单，动作平稳，便于维护
- 流量调节范围0~100%，无论停机还是运转中皆可调节流量
- 可实现多泵头结构，即提高流量也可以输送不同介质
- PVC，PVDF泵头皆机加工而成，耐压强度高，即使泵出口出现堵塞情况，泵头也不易开裂
- 独特的传动设计，泵运行噪音低
- flow range: 900~1500L/H; pressure range: 0~5kgf/cm²
- small size, small footprint, light weight, simple structure, smooth action, easy to maintain
- Flow adjustment range from 0 to 100%, can be either stopping or running regulate the flow of operation
- can achieve multi-head structure, that can improve the flow of transport or deliver different medium
- PVC, PVDF pump heads are made by machine, high strength, even if the pump outlet blockage, the pump head is not easy to crack;
- Unique transmission design, the noise of pump running is very low



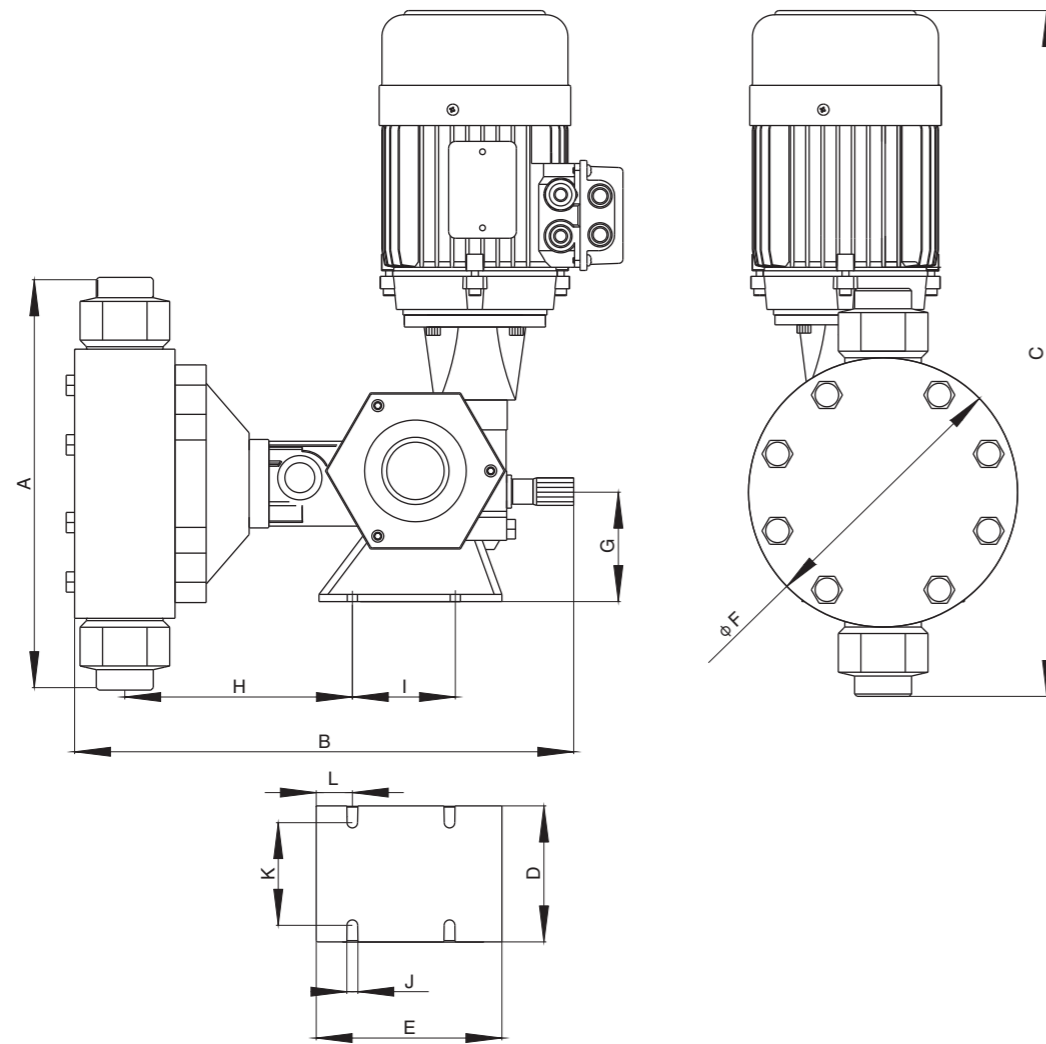
HDL系列机械隔膜计量泵性能参数表

HDLseries mechanical diaphragm metering pump performance

型号 Type	冲程频率 Stroke frequency (Hz)	流量 Flow (L/H)	最大压力 Max pressure (kgf/cm ²)	出入口径 Aperture (inch)	功率 Power (kw)	电压 Voltage (v)	冲程长度 Stroke length (mm)	重量 Weight (kg)
HDL900	120	900	3	1-1/2	0.75	3 ph 220v /380v 50Hz /60Hz	12	26
HDL1200	120	1200	3	1-1/2	1.1		15	28.6
HDL1500	120	1500	3	1-1/2	1.1		18	28.6
HDLH900	120	900	5	1-1/2	1.1		12	28.36
HDLH1200	120	1200	5	1-1/2	1.5		15	31.5
HDLH1500	120	1500	5	1-1/2	1.5		18	31.5

HDL系列尺寸图

HDLseries outline deimension drawing



型号 Type	Excution11\13\16\23											
	A	B	C	D	E	F	G	H	I	J	K	L
HDL900	345	423	551	114	153	225	91	201	81	9	85	30
HDL1200	345	423	551	114	153	225	91	201	81	9	85	30
HDL1500	345	423	551	114	153	225	91	201	81	9	85	30
HDLH900	345	423	551	114	153	225	91	201	81	9	85	30
HDLH1200	345	423	598	114	153	225	91	201	81	9	85	30
HDLH1500	345	423	598	114	153	225	91	201	81	9	85	30

常用单位换算表0219

长度

1千米(km)=0.621英里(mile) 1米(m)=3.281英尺(ft)-1.094码(yd) 1厘米(cm)=0.394英寸(in)
 1英里(mile)=1.609千米(km) 1英尺(ft)=0.3048米(m) 1英寸(in)=2.54厘米(cm)
 1海里(n mile)=1.852千米(km) 1码(yd)=0.9144米(m) 1英尺(ft)=12英寸(in)
 1码(yd)=3英尺(ft) 1英里(mile)=5280英尺(ft) 1海里(n mile)=1.1516英里(mile)

质量

1吨(t)=1000千克(kg)=2250磅(lb) 1千克(kg)=2.205磅(lb) 1短吨(sh. ton)=0.907吨(t)=2000磅(lb)=1.102短吨(sh. ton)=0.934长吨(long. ton)
 1长吨(long. ton)=1.0169吨(t) 1磅(lb)=0.454千克(kg) 1盎司(oz)=28.350克(g)

密度

1千克/米³(kg/m³)=0.001克/厘米³(g/cm³) 1磅/英尺²(lb/ft²)=16.02千克/米³(kg/m³) 1磅/英寸³(lb/in³)=16.02千克/米³(kg/m³)=0.0624磅/英尺³(lb/ft³)
 1磅/美加仑(lb/gal)=118.826千克/米³(kg/m³) 1磅/(石油)桶(lb/bbl)=2.853千克/米³(kg/m³) 1波/美密度=140/15.5°C时的比重-130 APL=141.5/15.5°C时的比重-131.5

压力

1兆帕(Mpa)=145磅/英尺²(psi) 145磅/英尺²(psi)=0.006892兆帕(Mpa) 1巴(bar)=0.1兆帕(Mpa)-14.503磅/英尺²(psi)
 =10.2千克/厘米²(kg/cm²)=10巴(bar) =0.0703千克/厘米²(kg/cm²) =1.0197千克/厘米²(kg/cm²)
 =9.8大气压(atm) =0.0689巴(bar)=0.068大气压(atm) =0.987大气压(atm)
 1大气压(atm)=0.101325兆帕(Mpa)
 =14.696磅/英尺²(psi)
 =10.333千克/厘米²(kg/cm²)
 =1.0133巴(bar)

面积

1平方公里(km²)=100公顷(ha)=247.1 1平方米(m²)=10.764平方英尺(ft²) 1公亩(are)=100平方米(m²)
 1英亩(acre)=0.386平方英里(mle²)
 1公顷(ha)=10000平方米(m²)=2.471英亩(acre) 1平方英里(mle²)=2.590平方公里(km²) 1英亩(acre)=0.4047公顷(ha)=40.47*10平方公里(km²)=4047平方米(m²)
 1平方英寸(ft²)=0.093平方米(m²) 1平方英寸(ft²)=6.452平方厘米(cm²) 10平方码(yd²)=0.8361平方米(m²)

动力粘度

1泊(P)=0.1帕·秒(Pa·s) 1厘泊(cP)=10⁻³帕/秒(Pa·s) 1千克/米²(kgf/s·m²)=9.80665帕·秒(Pa·s)
 1磅力秒/英尺²(lbf·s/ft²)=47.8803帕·秒(Pa·s) 力
 1牛顿(N)=0.225磅力(lbf)=0.102千克力(kgf) 1千克力(kgf)=9.81牛(N) 1磅力(lbf)=4.45牛顿(N) 1达因(dyn)=10⁻⁵牛(N)

温度

K(开尔文度)=5/9(°F+459.67) K=°C+273.15 n°F=[(n-32)×5/9]°C
 N°C(摄氏度)=(5/9/n+32)°F 1°F(摄氏度)=5/9°C(温度差)

功率

1千克/米/秒(kgf/m/s) 1米制马力(hp)=735.499瓦(W) 1卡/秒(cal/s)=4.1868瓦(W)=9.80665瓦(w) 1英热单位/时(Btu/h)=0.293071瓦(W)

速度

1英尺/秒(ft/s)=0.3048米/秒(m/s) 1英里/时(mile/h)=0.44704米/秒(m/s)