



抗直流电流互感器

Current transformer with DC-capability

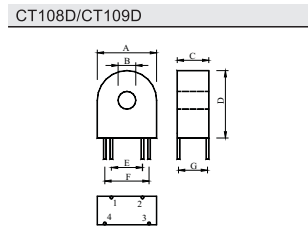
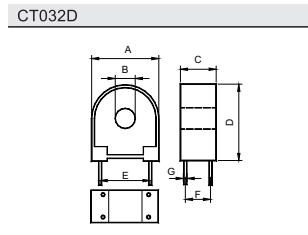
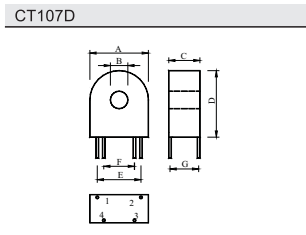
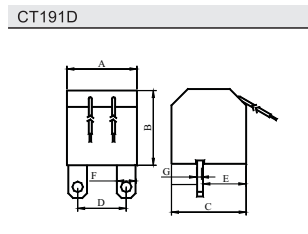
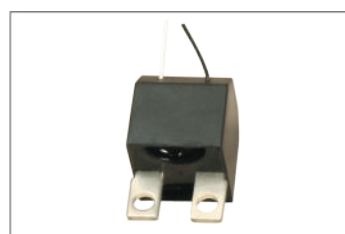
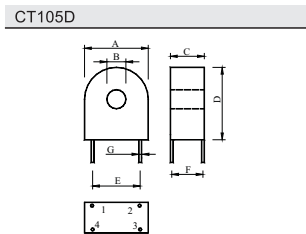
性能特点:

环氧树脂浇注封装, 良好的机械特性和绝缘特性; 适用电流范围广, 非常高的线性和稳定的相位误差; 微电流状态下的高精确度, 具有抗直流分量能力; 符合IEC 61036 1级表。

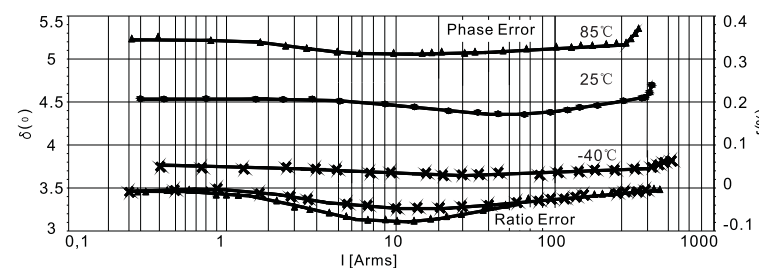
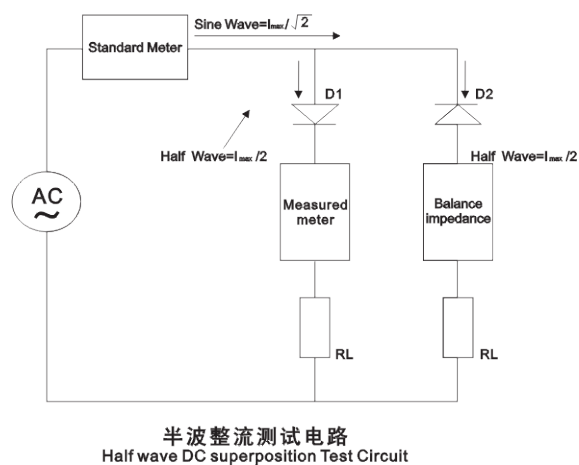
Performance characteristics and application areas:

Epoxy resin molding encapsulation, good mechanical property and insulation property; applicable for a wide range of current, extremely high linearity and stable phase error; High precision under micro current state with anti direct component ability; Anti DC electric energy meter and anti direct component AC measuring meter meet the standards of class-1 of IEC61036.

型号 Part NO	电气特性 Electrical Specifications							外形尺寸(mm) Mechanical Dimension(mm)						
	额定电流(A) Rated Current	最大电流(A) ¹⁾ Max Current	耐直流电流(Aop) ²⁾ Dc Current	电感(H) Inductance	负载电阻(Ω) Burden Resistance	比差(%) Ratio Error	相位差(°) Phase Error	A	B	C	D	E	F	G
CT105D	20	100	20	4.6	37.5	0.5	3.7	29.1	5	16.3	26	25	10	0.8
CT191D	20	100	20	4.6	37.5	0.5	3.7	30	32	32	20	15	10	2.4
CT107D	40	200	40	3.7	18.8	0.5	4.3	30	6.4	17.5	30.8	24	19.8	13.8
CT032D	60	250	60	3.0	12.5	0.5	4.2	30.5	82	17.6	30.6	24	13.8	1
CT108D	100	300	100	2.3	7.5	0.5	4.5	37.5	13	14	39	25.2	33	13
CT109D	120	400	120	2.0	6.25	0.5	4	37.5	13	14	39	25.2	33	13



1^o Maximum AC-primary current without saturation f < 1%
2^o Max. half rectified DC amplitude without saturation for class-1-counters (IEC 61036, f < 3%)



Typical temperature dependence of phase and ratio error

精密微型电流互感器

Precision micro current transformer

性能特点:

电压隔离能力强, 绝缘性能高, 绝缘电阻: 100MΩ/min@500VDC, 抗电强度: 3000V/2mA/1min@50Hz, 铁芯大多采用了高初始磁导率及低损耗的铁镍合金、超微晶等新型磁性材料, 精度等级高, 比差可以做到优于0.1%, 角差可以做到优于5分. 输出可直接插PC板, 或为附线的型式。

应用方面:

电子式电能表, 精密功率表, 电量变送器, 电流电压数据采样, 继电保护, 功率变送器, 伺服马达及电力监测设备, 动力系统等各种数字式电测仪器、仪表, 智能电控柜。

Performance characteristics:

Good voltage separation ability and insulation property, the insulation resistance: 100MΩ/min@500VDC, dielectric strength: 3000V/2mA/1min@50Hz, the iron cores mostly adopt new magnetic materials such as iron-nickel alloy and super micro-crystal of high initial and high magnetic permeability and low loss. The degree of precision is high that the ratio difference can be less than 0.1% and angle difference can be less than 5'. The output can be directly inserted in PC boards or used as pilot wires.

Application areas:

Electric energy meter, precision wattmeter, electric quantity transducer, data sampling for current and voltage, relay protection, power transmitter, servomotor and electric power monitoring facilities, various digital electrical measuring instruments in dynamic system, meters, and intelligent electric control cabinet.

型号 Part NO	电气特性 Electrical Specifications					外形尺寸(mm) Mechanical Dimension(mm)						
	一次电流(A) Primary Current	二次电流(mA) Secondary Current	精度等级(%) Accuracy	负载电阻(Ω) Burden Resistance	频率f(Hz)	A	B	C	D	E	F	G
CT011	5-10	2-5	0.1-3	5-50	50-400	16.9	5	9.1	16.9	12	5	0.6
CT021	5-15	2-10	0.1-3	5-50	50-400	18	5	10	19	12	5	0.6
CT022	5-15	2-10	0.1-3	5-50	50-400	18.2	3.8	10	19.2	12.5	5	0.6
CT023	5-15	2-10	0.1-3	5-50	50-400	18.2	3.6	10.2	19.2	12	5	0.6
CT031	5-15	2-10	0.1-3	5-50	50-400	18.8	5.5	10	19.5	15.2	6.2	0.8
CT032	20-100	4-40	0.1-3	10-300	50-400	30.5	8.2	17.6	30.63	23.8	13.8	1
CT041	5-15	2-10	0.1-3	5-50	50-400	16.8	4.5	9.5	19.72	12.7	5	0.8
CT051	5-20	2-20	0.1-3	5-200	50-400	19	7	11	22	12	5	0.8
CT052	5-20	2-20	0.1-3	5-200	50-400	18.6	5	18.2	19.8	13	11	16.7
CT053	10-80	4-32	0.1-3	10-200	50-400	24	5	21.8	25	20	10	20
CT061	5-15	2-10	0.1-3	5-100	50-400	17	4.5	16	17	11.5	14	12
CT062	5-20	2-20	0.1-3	5-200	50-400	18.4	20.2	17.5	5	11	13	16.5
CT063	5-20	2-20	0.1-3	5-200	50-400	19.5	21	18.8	5	11.2	13.2	16
CT064	10-80	4-32	0.1-3	10-200	50-400	24.6	8	21.3	25.8	20	10	20
CT065	10-80	4-32	0.1-3	10-200	50-400	26.5	26.5	19.8	6	10	19.3	20.8
CT066	10-80	4-32	0.1-3	10-200	50-400	27.5	27.5	20.2	4.5	10	20	19.6
CT071	5-30	5-20	0.1-3	5-100	50-400	23	6.6	8.6	24.5	15	5	1
CT081	5-50A	2-20	0.1-3	10-200	50-400	23.8	6	14.7	24.2	20	5	0.8
CT091	0.5-5	1-10	0.1-3	5-100	50-400	27	18	27	19.6	14.6	0.8	
CT092	0.5-10	1-10	0.1-3	10-200	50-400	30	30	26.1	19.5	19.5	1	
CT101	5-50A	2-20	0.1-3	5-200	50-400	23.5	6.8	11	25	15.2	19.1	10
CT102	10-80	4-32	0.1-3	10-300	50-400	26	8.9	17	28.1	15.2	19.1	15.5
CT103	20-120	8-48	0.1-3	10-300	50-400	37.5	13	14	39	25.2	33	13
CT104	100-400	40-200	0.1-3	20-400	50-400	49.1	18.4	19.9	55	29.6	37.4	19
CT105	10-80	4-32	0.1-3	10-300	50-400	29.1	5	16.3	26	25	10	0.8