



零序电流互感器 Zero-phase current transformer

性能特点及应用领域：

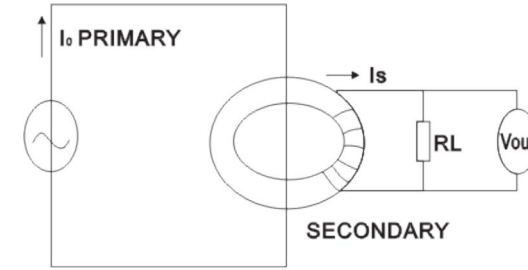
高灵敏度，输出特性稳定可靠，残留磁性特性，良好的过输入特性，平衡特性及温度特性。采用ABS阻燃塑料外壳，环氧树脂浇注封装，绝缘隔离能力强，防潮抗震。

剩余电流断路器，微电流感应传感器，漏电保护插头，接地漏电断路器漏电开关，插座，插头及家用电器保护。

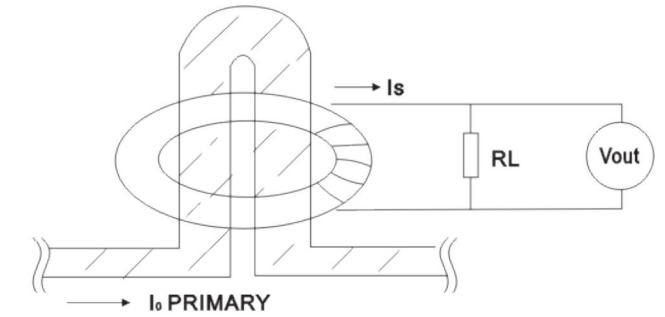
Performance characteristics and application areas:

High sensibility, stable and reliable output, residue magnetic characteristics, good excessive input, balance and temperature characteristics; it adopts ABS flame retardant plastics, epoxy resin molding encapsulation, good insulation property, moisture protection and shock resistance.

Residual current circuit breaker, micro current induction sensor, earth leakage protecting plugs, earthing residual current circuit breaker switch, sockets, plugs and household electrical appliance protection.

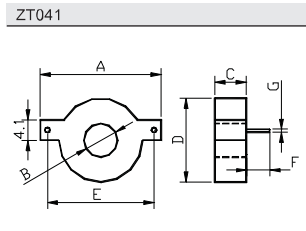
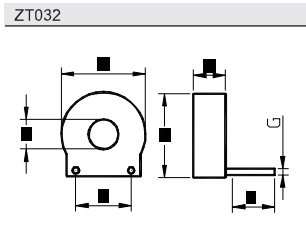
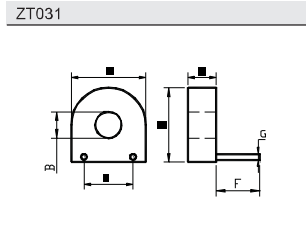
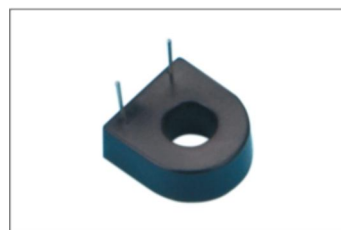
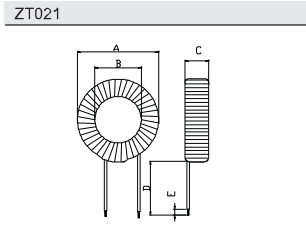
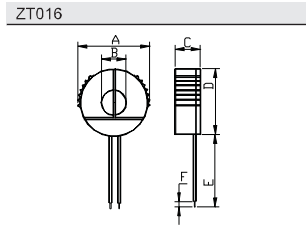
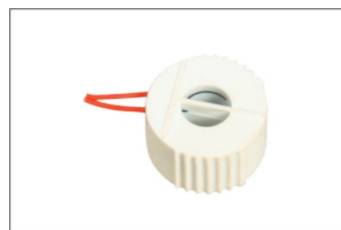
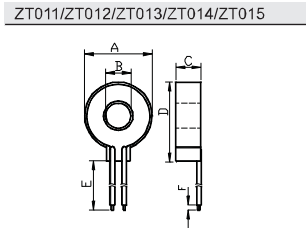


输出测试电路图
Output Voltage Test Circuit



平衡特性测试电路图
Balance Characteristics Test Circuit

型号 Part NO	电气特性 Electrical Specifications				外形尺寸(mm) Mechanical Dimension(mm)						
	额定电流(A) Rated Current	输出电压(mV) Output voltage	测试条件 Test Conditions		A	B	C	D	E	F	G
			I0(mA)	RL(Ω)							
ZT011	30	8.0(min)	11.25	1k	16.7	6.5	7	19	30	4	
ZT012	50	8.0(min)	11.25	1k	22	9	8.2	25	53	4	
ZT013	50	300(min)	30	100k	23.2	8.3	10	25.5	40	4	
ZT014	125	7.5-8.5	25	330	30	15	9.2	32.2	100	4	
ZT015	60	350(min)	30	100k	25.4	10	8.5	28	40	4	
ZT016	60	350(min)	30	47k	26	10	15	24.5	30	4	
ZT021	60	350(min)	30	47k	27	10	15	40	4		
ZT031	30	6.5-7.5	11.25	750	17	7	7	18	10	6	0.6
ZT032	30	6.5-7.5	11.25	750	17	7	7	18	10	4	0.6
ZT041	30	8.0(min)	11.25	1k	24	6.7	6.5	16.5	20	4	0.8



电表用电流互感器 Electric meter current transformer

性能特点及应用领域：

环氧树脂浇注封装，良好的机械特性和绝缘特性；铁芯大多采用了高初始磁导率及低损耗的铁镍合金、超微晶等新型磁性材料，精度等级高，比差可以做到优于0.1%，角差可以做到优于5分。用于电子式电能表。

Performance characteristics and application areas:

Epoxy resin molding encapsulation, good mechanical property and insulation property; the iron cores mostly adopt new magnetic materials such as iron-nickel alloy and super micro-crystal of high initial and high magnetic permeability and low loss. The degree of precision is high that the ratio difference can be less than 0.1% and angle difference can be less than 5'. Used in electric energy meters.

型号 Part NO	电气特性 Electrical Specifications				外形尺寸(mm) Mechanical Dimension(mm)						
	额定电流(A) Rated Current	二次电流(mA) Secondary Current	负载电阻(Ω) Burden Resistance	精度等级 Accuracy	A	B	C	D	E	F	G
CT191	20-100	5-20	5-20	0.1-0.5	30	32	32	20	15	10	24
CT192	10-50	5-20	5-20	0.1-0.5	30.8	30.8	22.8	22	14.5		
CT201	10-80	2-10	2-10	0.1-0.5	78	8.5	18	28	67.5	13.5	
CT211	1.5-10	2-10	2-10	0.1-0.5	23	33	87	95			

