



660V配用电流互感器 660V Distribution current transformer

性能特点及应用领域:

电压隔离能力强, 绝缘性能高, 二次输出为 5A 660V配用电流互感器 符合 IEC60044-1标准。继电保护, 电流、功率、电能监控装置, 电力系统, 动力系统等等。

Performance characteristics and application areas:

660V Distribution current transformer of good voltage separation ability and insulation property with 5A secondary output Meet IEC60044-1 standards. Relay protection, current, power, electric energy supervising device, power system, dynamical system, etc.

型号 Part NO	电气特性 Electrical Specifications			外形尺寸(mm) Mechanical Dimension(mm)								图型 Graphic	图片 Photo
	额定电流比 Current Ratio	负载 Burden(VA)	精度等级 Accuracy	A	B	C	D	E	F	G			
CT145-500	50/5A	2	3%	60	26	33							
CT145-700	60/5A	2	2%										
CT145-750	75/5A	2	2%										
CT145-800	80/5A	2	2%										
CT145-101	100/5A	2	1%										
CT145-121	120/5A	2.5	1%										
CT145-1250	125/5A	2.5	1%										
CT145-151	150/5A	2.5	1%										
CT145-201	200/5A	2.5	1%										
CT145-251	250/5A	5	1%										
CT176-500	50/5A	2	3%	100	74	35	88.5	34.5	74	83			
CT176-600	60/5A	2	2%										
CT176-750	75/5A	2	2%										
CT176-800	80/5A	2	2%										
CT176-101	100/5A	2	1%										
CT176-121	120/5A	2.5	1%										
CT176-1250	125/5A	2.5	1%										
CT176-151	150/5A	2.5	1%										
CT176-201	200/5A	2.5	1%										
CT176-251	250/5A	5	1%										
CT176-301	300/5A	5	1%										
CT176-500	50/5	1.0	±2%	100	49	38	108	87					
CT176-750	75/5	1.5	±2%										
CT177-101	100/5	2.0	±2%										
CT177-151	150/5	5.0	±1%										
CT177-201	200/5	5.0	±1%										
CT177-251	250/5	10.0	±1%										
CT177-301	300/5	12.5	±1%										
CT177-401	400/5	12.5	±1%										
CT177-501	500/5	20.0	±1%										
CT177-601	600/5	25.0	±1%										
CT177-751	750/5	25.0	±1%										
CT177-801	800/5	25.0	±1%										
CT177-102	1000/5	25.0	±1%										
CT177-122	1200/5	30.0	±1%										
CT177-152	1500/5	50.0	±1%										

高频电流传感器 High frequency current sensor

性能特点及应用领域:

电压隔离能力强, 绝缘性能高。适用于20KHz-50KHz或更高频率, 作为二次电流转换。灵敏度可达1伏/安, 通过绕两匝灵敏度可提高一倍, PCB板安装。用于线路过载保护、开关反馈、保护切断, 检测负荷跌落等。

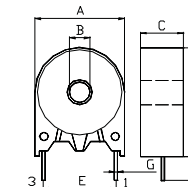
Performance characteristics and application areas:

Good voltage separation ability and insulation property. It is applicable for 20 KHz-50 KHz or higher frequency and secondary current transformation. The sensitivity can reach 1 V/A, and the sensibility will be doubled by two coils, used for PCB installation. It is used for circuit overload protection, switch feedback, tripping protection and load drop inspection, etc.

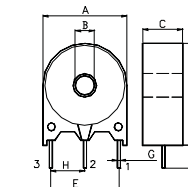
型号 Part NO	圈数 Turns	电气特性 Electrical Specifications				外形尺寸(mm) Mechanical Dimension(mm)								
		电感1KHz/0.25V Inductance <i>i</i>	二次电流 Secondary Current	灵敏度 Sensitivity	负载电阻 Burden Resistance	A	B	C	D	E	F	G	H	
		(mH)/min	(mA)/max	Vout(V)	Iin(A)	(Ω)								
CS01050	50	5	300	1	1	50	17	5	9.2	20	12.5	4	0.8	
CS01100	100	20	150	1	1	100	17	5	9.2	20	12.5	4	0.8	
CS01200	200	80	75	1	1	200	17	5	9.2	20	12.5	4	0.8	
CS01300	300	180	50	1	1	300	17	5	9.2	20	12.5	4	0.8	
CS01750	750	1125	40	1	1	750	17	5	9.2	20	12.5	4	0.8	
CS02050	25+25	5	300	1	1	50	17	5	9.2	20	12.5	4	0.8	6.25
CS02100	50+50	20	150	1	1	100	17	5	9.2	20	12.5	4	0.8	6.25
CS02200	100+100	80	75	1	1	200	17	5	9.2	20	12.5	4	0.8	6.25
CS02300	150+150	180	50	1	1	300	17	5	9.2	20	12.5	4	0.8	6.25



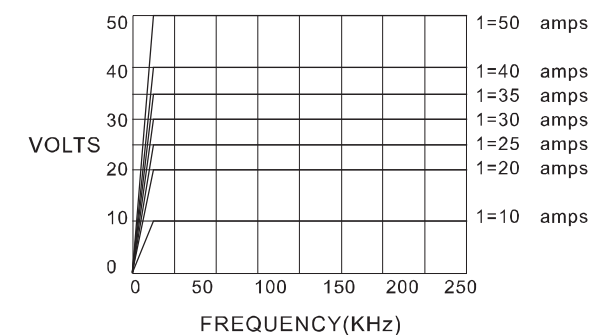
CS01050/CS01100/CS01200/CS01750



CS02050/CS02100/CS02200/CS02300



Output Characteristics:



Test Circuit:

