



### 精密微型电压互感器

#### Precision micro potential transformer

#### 1、电流型电压互感器

性能特点及应用领域:

环氧树脂灌封, 全封闭、机械和耐环境性能好, 电压隔离能力强, 绝缘性能高, 体积小, 重量轻, 外形美观, 易于集成安装; 铁心大多采用了高初始磁导率的铁镍合金、超微晶等新型磁性材料, 线性好, 精度等级高, PCB安装模式, 使用时初级需加限流电阻。

电量变送器, 电子式电能表, 精密功率表, 电力监控仪表, 电压监测及测量。

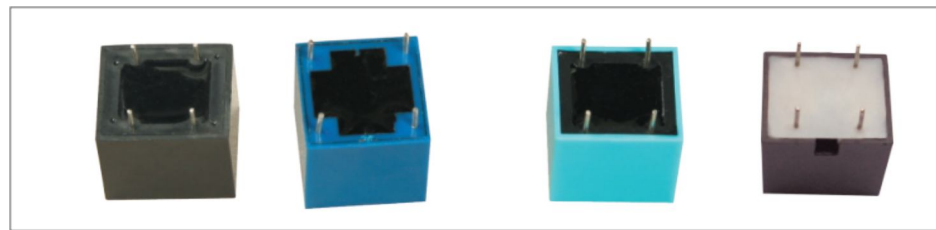
#### 1.Current-type potential transformer

Performance characteristics and application areas:

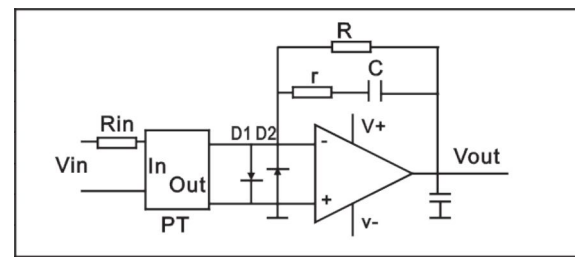
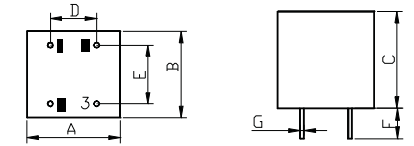
Epoxy resin molding and fully closed, good mechanical performance and environment resistance, good voltage separation and insulation property, small volume, low weight, good in shape and easy for installation; the iron cores mostly adopt new magnetic materials such as iron-nickel alloy and super micro-crystal with good linearity and high degree of precision, PCB installation mode, current limiting resistance is needed for primary when using.

Electric quantity transducer, electric energy meter, precision power wattmeter, electric power monitoring meter, Voltage monitoring and measurement

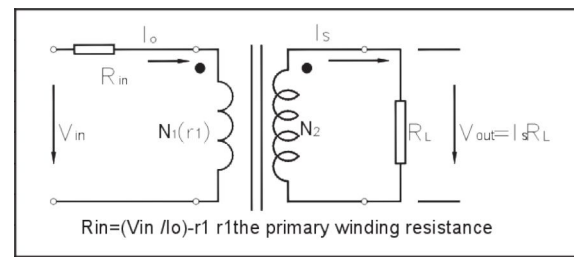
型号 Part NO	电气特性 Electrical Specifications				外形尺寸(mm) Mechanical Dimension(mm)							
	输入电压 Input voltage	电流比 Current Ratio	负载电阻(Ω) Burden Resistance	精度等级 Accuracy	A	B	C	D	E	F	G	
PT011	100V,150V, 220V,380V, 450V	0.5mA/0.5mA	100	±0.1%	20	17	14	14	13	4	0.8	
PT012		1mA/1mA	100	±0.1%	18	17	16	13	13	4	0.8	
PT013		1mA/1mA	100	±0.1%	18	18	17	13	14	4	0.8	
PT014		2mA/2mA	100	±0.1%	19	17	19	10	13	4	0.8	
PT015		2mA/2mA	100	±0.1%	22	19	19	10	13	4	0.8	
PT016		2mA/2mA	100	±0.1%	22	19	20	10	13	4	0.8	



PT011/PT012/PT013/PT014/PT015/PT016



典型运用电路图  
Typical application circuit



测试电路图  
Test Circuit

#### 2、电压变换型电压互感器

性能特点及应用领域:

环氧树脂灌封, 全封闭、机械和耐环境性能好, 电压隔离能力强, 绝缘性能高, 体积小, 重量轻, 外形美观, 易于集成安装; 线性好, 精度高, 工作范围宽, PCB安装模式. 原边不串电阻, 电压直接输入, 副边直接输出电压。

电量变送器, 电子式电能表, 精密功率表, 电力监控仪表, 电压测量。

#### 2.Voltage-alternating potential transformer

Performance characteristics and application areas:

Epoxy resin molding and fully closed, good mechanical performance and environment resistance, good voltage separation and insulation property, small volume, low weight, good in shape and easy for installation; good linearity, high precision, wide working range, PCB installation mode. The primary side is not connected with resistance and directly inputs voltage while the secondary side directly output voltage.

Electric quantity transducer, electric energy meter, precision power wattmeter, electric power monitoring meter, voltage measurement

型号 Part NO	电气特性 Electrical Specifications					外形尺寸(mm) Mechanical Dimension(mm)							
	输入电压 Input voltage	输出电压 Output voltage	空载电流 Excitation current	负载电阻(Ω) Burden Resistance	精度等级 Accuracy	A	B	C	D	E	F	G	H
PT017	0-220v	0-10v	≤0.5mA	≥100kΩ	±0.1%	31	25	34	25	15	7.5	1	4
PT018	0-220v	0-10v	≤0.5mA	≥100kΩ	±0.1%	35	32	31	25	15	22	1	5
PT019	0-220v	0-10v	≤0.5mA	≥100kΩ	±0.1%	34	32	31	15	7.5	22	1	5
PT021	0-220v	0-10v	≤0.5mA	≥100kΩ	±0.1%	32	27	20	15	7.5	5	0.8	
PT022	0-220v	0-10v	≤0.5mA	≥100kΩ	±0.1%	32	26	20	15	7.5	5	0.8	
PT023	0-380v	0-10v	≤0.5mA	≥100kΩ	±0.1%	33	29	20	15	7.5	4	0.8	
PT031	0-120v	0-10v	≤0.5mA	≥100kΩ	±0.1%	28	33	18	20	9.8	24	5	10
PT032	0-120v	0-10v	≤0.5mA	≥100kΩ	±0.1%	30	33	20	20	9	24	12	1

