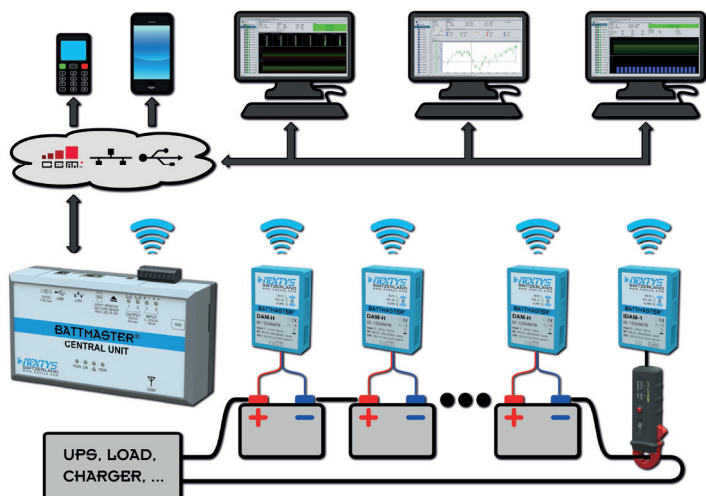


# BATTMASTER®



## Wireless Battery Monitoring System



**BATTMASTER®** is the first *wireless (license free)* battery monitoring system.

It can be used in various fields such as:

- **UPS**
- **TELECOM**
- **ELEVATORS**
- **CRITICAL BATTERY POWERED SYSTEMS**

Application examples:

- **protecting** mission critical systems
- evaluating **battery compliance** with the system
- evaluating **battery performance**
- **dimensioning new battery** based systems
- **supporting claims** related to system behavior

Major benefits:

- **installation, maintenance** and **operating** costs decrease
- control over the **battery operating conditions**
- **battery failure prediction**
- **system reliability**
- **allows** easy battery system's expansion

**BATTMASTER®** measures and stores **battery voltage, temperature, current** and **internal resistance** data for up to 1024 batteries/system. **User settable alarms** related to these parameters can be generated through E-Mail, LAN, SMS or dry contacts.

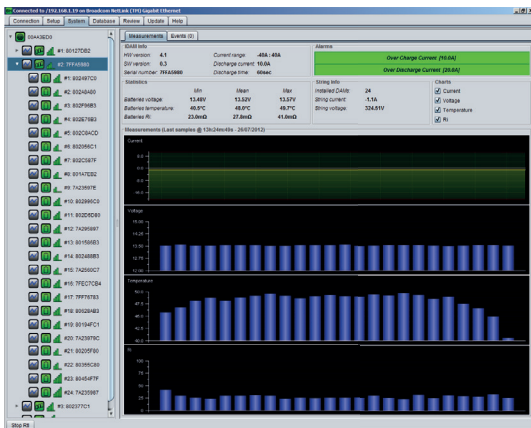
The **built-in clock** helps you to keep a precise history of the monitored parameters.

**BATTMASTER®** has a **good measurement precision** and a **complete, user-friendly database**. The recorded data (either on PC or on SD cards) can be easily transferred and processed as **spreadsheets or graphs**.

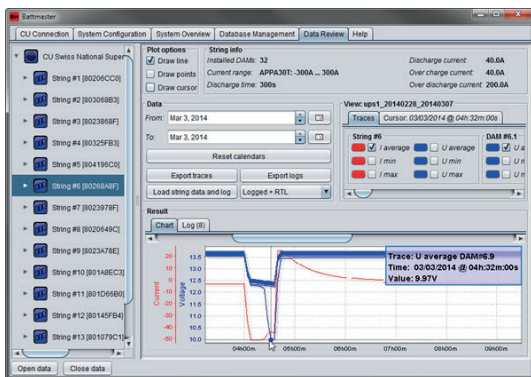
**BATTMASTER®** powerful application software (operating under **MS Windows®**) allows a precise analysis of the logged data and eases your decision making process.

# **BATTMASTER®**

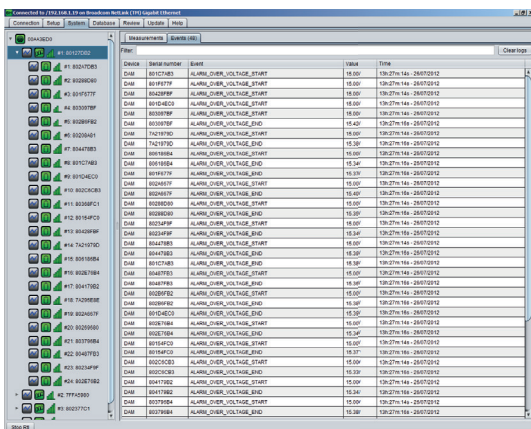
## **YOUR LOYAL PARTNER!**



System Status Screen



System History Screen



Alarm History Screen

# Technical Specifications

## System Components

- **Central Unit (CU) - 1 per system**
  - Wireless data collector unit
  - 100-240V power supply, backup batteries (~1.5h)
  - Supports up to 1024 DAMs and 64 IDAMs
  - Provided with 4GB SD card (about 5 years of logging)
  - 100BASE-TX Ethernet, full speed USB 2.0, Modbus/TCP
  - Embedded webserver for remote monitoring
  - Manages e-mail and SMS notifications
  - Stores user settable alarm thresholds
- **Data Acquisition Module (DAM) - 1 per battery**
  - Wireless voltage, temperature and internal resistance logger
- **Current Acquisition Module (IDAM) - 1 per string of batteries**
  - Wireless current and environmental temperature logger
  - Powered by battery or external power supply
- **BATTMASTER® software**
  - System configuration and monitoring
  - Database of events and measurements, data review
  - Real time system monitoring
  - Data export to .CSV or .PNG formats

## Communication

- **Wireless** (license free frequency, proprietary network protocol) between (I)DAMs and CU, range 100m (open air)
- **USB, LAN** between CU and PC
- **GSM (Quad Band)** - for SMS notifications
- **Dry contacts** for monitoring system alarms
- **Isolated Digital Inputs** for external custom control

## Monitored Battery Types

- 2...12V lead acid batteries (other chemistries on request)

## Monitored Battery Parameters

- **Voltage** (measurement accuracy:  $\pm 1.5\%$ )
- **Temperature** ( $-20...80^{\circ}\text{C}$ ,  $\pm 2^{\circ}\text{C}$ )
- **Internal resistance** ( $1...300\text{m}\Omega$ ,  $\pm 10\%$  or  $\pm 1\text{m}\Omega$ )
- **Discharging cycles**
- **Current:** 300A range  $\pm(2.4\% + 3\text{A})$  / 600A range  $\pm(4\% + 4\text{A})$
- **Battery operating time**

## Redundancy

- 2 x NiMH rechargeable batteries for CU backup (~1.5h)
- (I)DAMs store measures and events in case of temporary communication failure

## Mechanical

- **CU:** size 82x150x46mm, weight 250g, ABS enclosure
- **(I)DAM:** size 81x56x21mm, weight 40g, ABS enclosure, with VELCRO tape for fixing
- **Current Clamp:** size 185x55x40mm, weight 180g (300A)  
size 203x70x37mm, weight 230g (600A)



中国统一热线4006-022-002

深圳北京上海guan@tuizer.com

