

## Ball Type Flow Indicator

Horizontal Installation



- Indication range:  
0.05 - 15...0.18 - 105 l/min. water
- $p_{max}$  6 bar,  $t_{max}$  120 °C
- Connection:  
G 1/8...G 1, 1/8" NPT...1" NPT
- Material: brass



KOBOLD offices exist in the following countries:

**ARGENTINA, AUSTRIA, BELGIUM, BRAZIL, CANADA, CHINA,  
COLOMBIA, FRANCE, GREAT BRITAIN, ITALY, NETHERLANDS,  
POLAND, SWITZERLAND, USA, VENEZUELA**

KOBOLD Messring GmbH  
Nordring 22-24  
D-65719 Hofheim/Ts.  
☎ (06192) 299-0  
Fax (06192) 23398  
E-mail: info.de@kobold.com  
Internet: www.kobold.com

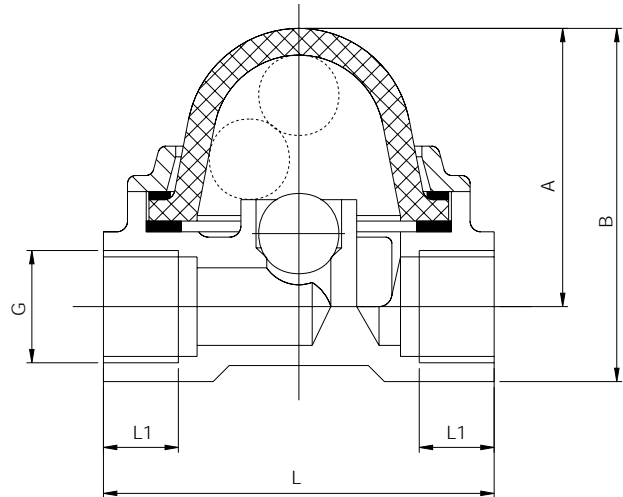
**Model:**  
DKB



**Material**

	DKB-11...	DKB-21...
Housing:	brass (MS-58)	brass (MS-58)
Glass dome:	Borosilicate glass	Borosilicate glass
Ball:	POM	PTFE
Sealing:	EPDM	FPM
Rings:	brass (MS-58)	brass (MS-58)
Screws:	st. steel	st. steel

**Dimensions**



**Connection**

G 1/8 R06	G 1/4 R08	G 3/8 R10	G 1/2 R15	G 3/4 R20	G1 R25
1/8" NPT N06	1/4" NPT N08	3/8" NPT N10	1/2" NPT N15	3/4" NPT N20	1" NPT N25

Model	P <sub>max</sub>	t <sub>max</sub>	G	NPT	L1	L	A	B	Weight kg
DKB-..01H	6 bar	120°C	G 1/8	1/8"	8	56	41	50	0.3
DKB-..02H	6 bar	120°C	G 1/4	1/4"	10	56	41	50	0.28
DKB-..03H	6 bar	120°C	G 3/8	3/8"	14	73	53	67	0.57
DKB-..04H	6 bar	120°C	G 1/2	1/2"	14	73	53	67	0.54
DKB-..05H	6 bar	120°C	G 3/4	3/4"	16	109	72	94	1.41
DKB-..06H	6 bar	120°C	G 1	1"	18	109	72	94	1.30

**Order data** (Example: DKB-1101H R06)

Indication range		Model		Connection	
l/min water	ΔP* (bar)	DKB-11..	DKB-21..	G-thread	NPT-thread
0.05 - 15	1	DKB-1101H..	DKB-2101H..	R06	N06
0.05 - 20	1	DKB-1102H..	DKB-2102H..	R08	N08
0.06 - 45	1	DKB-1103H..	DKB-2103H..	R10	N10
0.07 - 50	1	DKB-1104H..	DKB-2104H..	R15	N15
0.18 - 105	0.5	DKB-1105H..	DKB-2105H..	R20	N20
0.14 - 105	0.5	DKB-1106H..	DKB-2106H..	R25	N25

\* max. flow